

Revolving Stainless Steel Handles

SPECIFICATION

Stainless Steel **NI**
 - AISI 303
 - fine turned, blank

Spindle
 Stainless Steel AISI 303

INFORMATION

Typical in design are the revolving handles GN 798.1 with their stepped shape consisting of two cylinders giving the operator a better grip.

TECHNICAL INFORMATION

- Stainless Steel characteristics (see page A26)

Cylindrical Revolving handles

Spindle Steel, zinc plated / with female

SPECIFICATION

Plastic **KT**
 Technopolymer (Polyamide PA)
 - temperature resistant up to 90 °C
 - black, matt finish

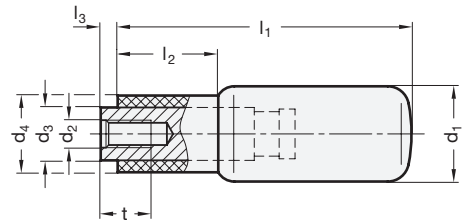
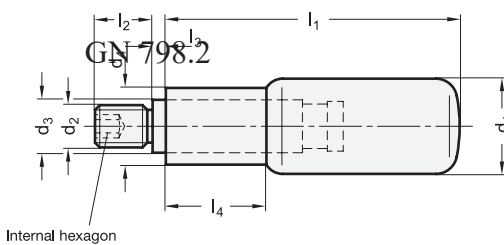
Spindle Steel
 zinc plated, blue passivated

INFORMATION

Typical in design are the revolving handles GN 798.2 with their stepped shape consisting of two cylinders giving the operator a better grip.

TECHNICAL INFORMATION

- Plastic characteristics (see page A2)



GN 798.1 STAINLESS STEEL

Description	d1	d2	d3	d4	l1	l2	l3	l4	Δ
GN 798.1-NI-18-M6	18	M 6	10	14.5	56	13	2.5	19	95
GN 798.1-NI-18-M8	18	M 8	10	14.5	56	13	2.5	19	97
GN 798.1-NI-22-M8	22	M 8	14	18.5	59	14	2.5	21	163
GN 798.1-NI-22-M10	22	M 10	14	18.5	59	14	2.5	21	165
GN 798.1-NI-24-M8	24	M 8	14	18.5	74	16	2.5	27	210
GN 798.1-NI-24-M10	24	M 10	14	18.5	74	16	2.5	27	212

GN 798.2

Description	d1	d2	d3	d4	l1	l2	l3	t	Δ
GN 798.2-KT-16-M5	16	M 5	10	13	41.5	15	2.5	10	20
GN 798.2-KT-18-M5	18	M 5	10	14.5	56	19	2.5	10	28
GN 798.2-KT-22-M6	22	M 6	14	18.5	59	21	2.5	12	75
GN 798.2-KT-24-M6	24	M 6	14	18.5	74	27	2.5	12	86
GN 798.2-KT-25-M8	25	M 8	16	20	84	30	2.5	14	116

